



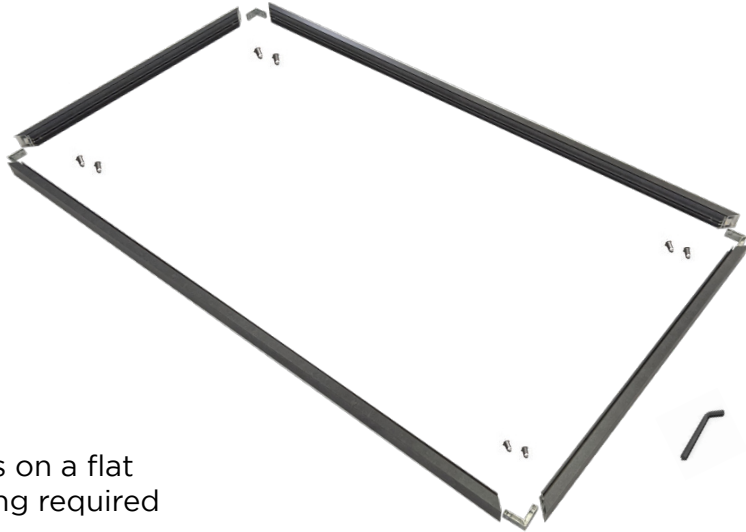
ARCHIFrame

assembly instructions



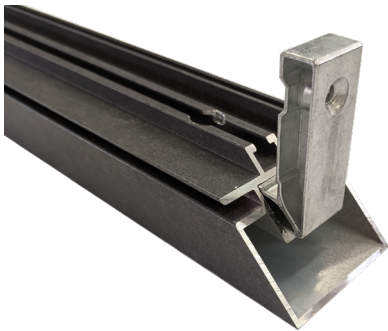
checklist: ☐ 4x corner brackets ☐ 4x ARCHIFrame lengths ☐ 8x screws ☐ 1x torx key

1



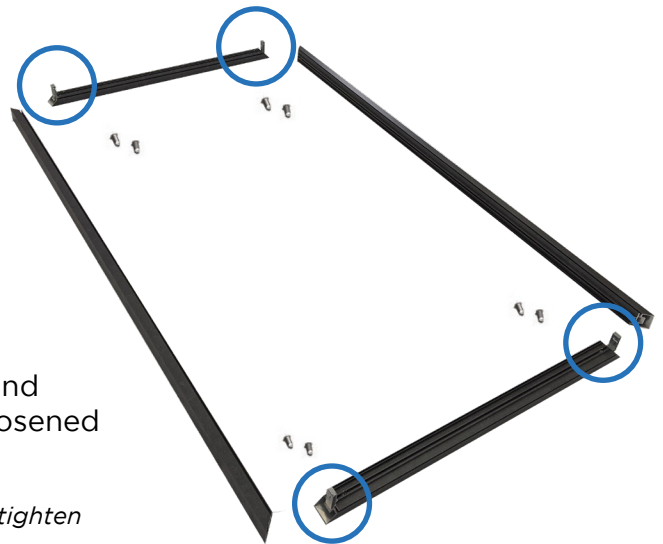
Lay out the ARCHIFrame components on a flat surface and ensure you have everything required before you start the assembly.

2



Insert corner brackets into the channels of the top and bottom lengths of frame (screws may need to be loosened to allow brackets to slide into position).

NOTE: To ensure a precise line-up of the frame profiles, do not tighten any of the screws until you have reached step 6.

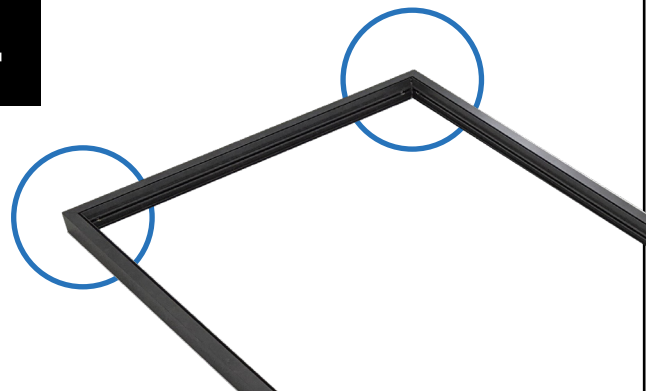


3



Slide top and side length together.

4



Repeat on the opposite corner so that 3 lengths are connected.

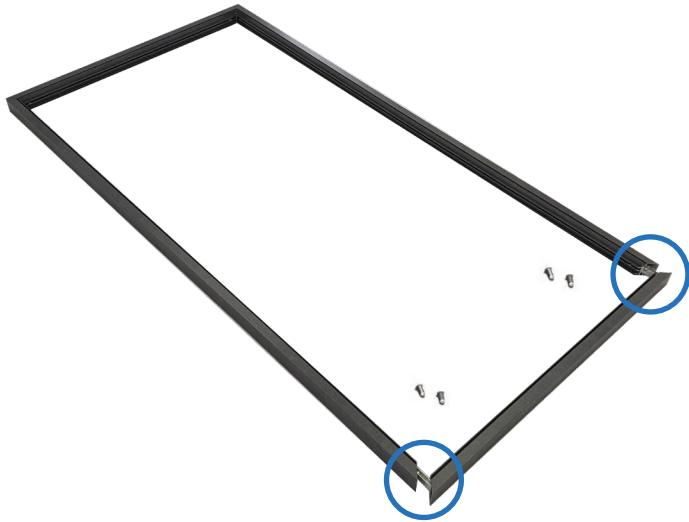


ARCHIFrame

assembly instructions



5



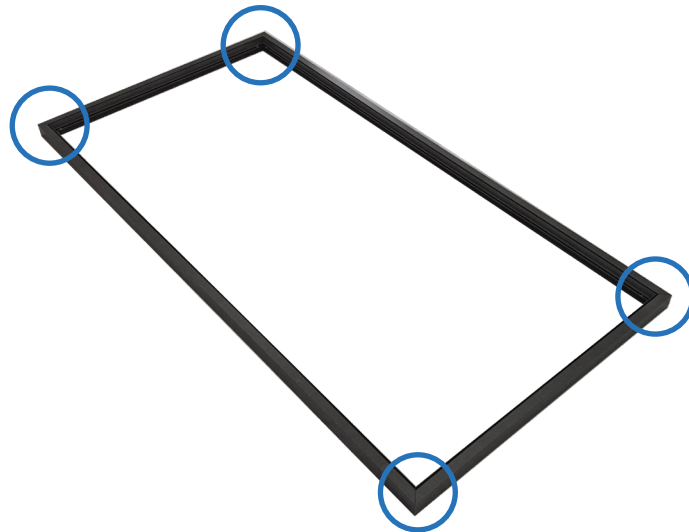
Attach the remaining two corners at the same time.

6



Ensure corner is aligned and then tighten screws using torx key.

7



Repeat step 6 on all remaining corners.

8



Now that you've finished assembling your ARCHIFrame, it's time to apply your custom ARCHIFrame fabric skin. Please refer to our printed 'ARCHIFrame Fabric Installation Guide'.

