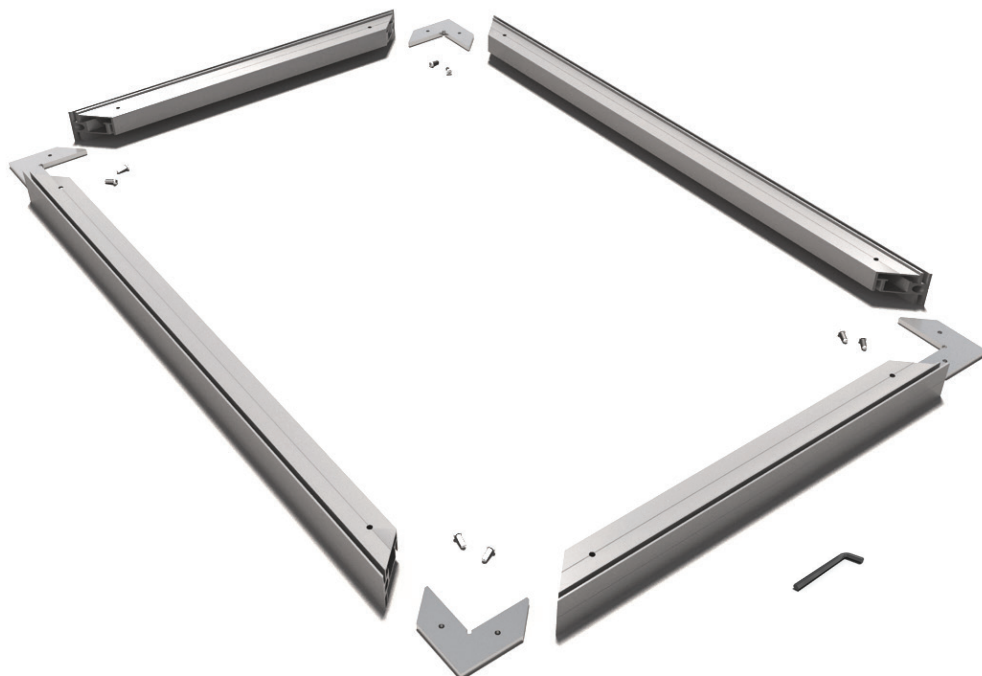




assembly instructions

DS101 - double-sided ReFrame®



1

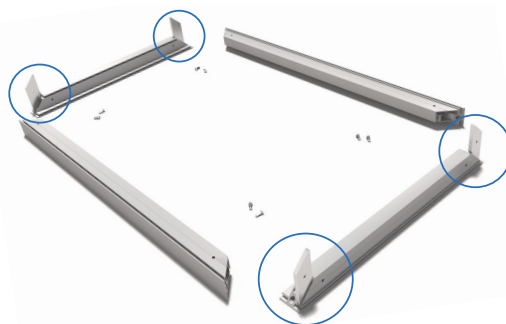
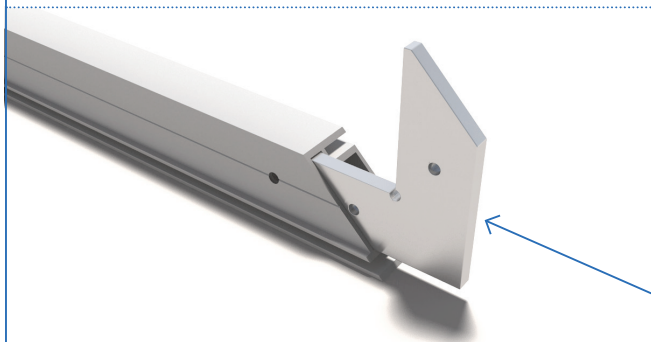
Lay out the ReFrame® components on a flat surface and ensure you have everything required before you start the assembly.

CHECKLIST

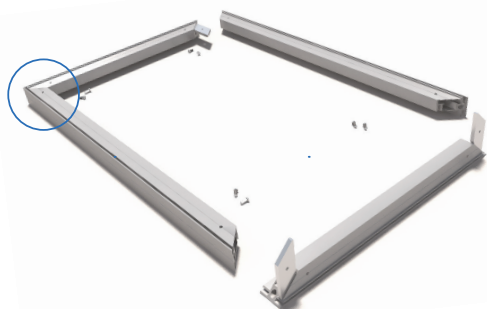
4x	Corner Brackets
4x	ReFrame® Lengths
8x	Screws
1x	Allen Key

2 Insert corner brackets into the channels of the top and bottom lengths of frame (screws may need to be loosened to allow brackets to slide into position)

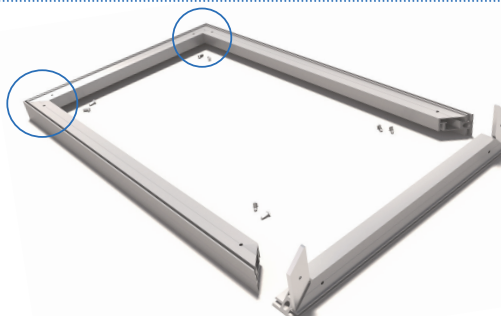
NOTE: To ensure a precise line-up of the frame profiles, do not tighten any of the screws until you have reached step 7



3 Slide top and side length together



4 Repeat on the opposite corner so that 3 lengths are connected

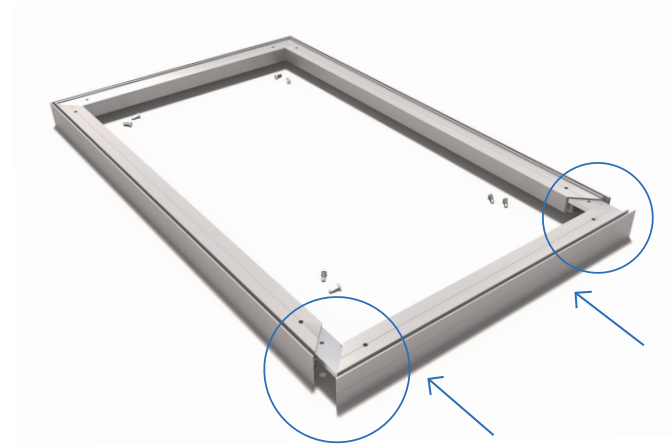


assembly instructions

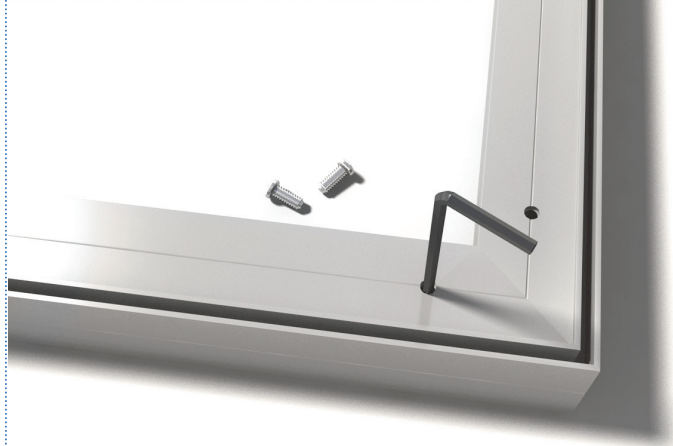
afi
BRANDING

DS101 - double-sided ReFrame®

5 Attach the remaining two corners at the same time



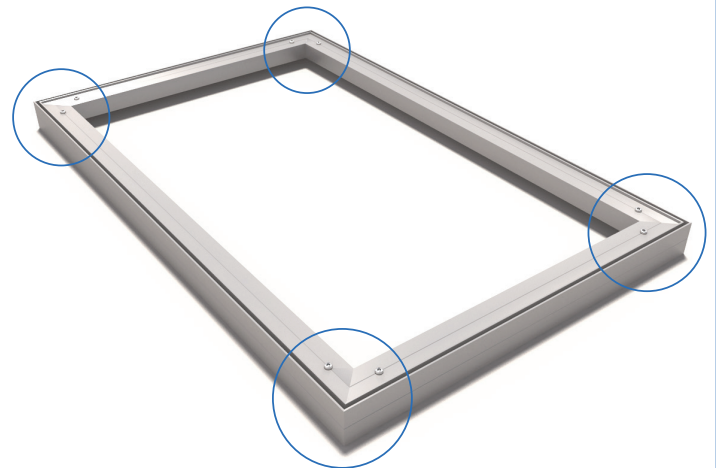
6 Insert the allen key into the pre-drilled holes to ensure alignment with the corner bracket holes



7 Ensure corner is aligned and then tighten screws using allen key



8 Repeat step 7 on all remaining corners



9 Applying your custom ReFrame® fabric skin

Now that you've finished assembling your ReFrame®, it's time to apply your custom ReFrame® fabric skin. Please refer to either a printed 'ReFrame® Fabric Installation Guide' or go to www.reframe.com.au to watch one of our instructional assembly videos to see how to correctly apply your ReFrame® fabric skin.

NOTE: The assembly instructions for the DS101 (and included components) illustrate the fundamental steps to assemble a 'standard' Double-Sided type ReFrame®. If your ReFrame® is oversize, has additional components such as joiners (not shown on this fact sheet), accessories, or has bends/curves and you are unsure how to proceed with assembly, please contact the team at AFI Branding on 1300 652 514 and we will guide you through the assembly process.

re frame®

Developed by AFI Branding